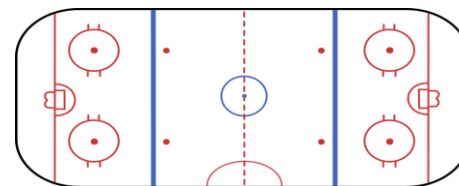


# August 2022



Sunday	Monday	Tuesday	Wednesday	Thursday	Friday	Saturday
31	1 <b>ADULT DROP IN 9AM-10:30AM</b> S & P (12 + UNDER) 11AM-12:30PM S & P (13-17) 1PM-2:30PM FREESTYLE 3PM-5PM	2 FREESTYLE 8:30AM-10AM SENIOR S & P 10AM-11:30AM OPEN SKATE 12PM-2:50PM	3 <b>ADULT DROP IN 9AM-10:30AM</b> S & P (12 + UNDER) 11AM-12:30PM S & P (13-17) 1PM-2:30PM	4 FREESTYLE 8:30AM-10AM SENIOR S & P 10AM-11:30AM OPEN SKATE 12PM-2:50PM FREESTYLE 3PM-5PM	5 <b>ADULT DROP IN 9AM-10:30AM</b> S & P (12 + UNDER) 11AM-12:30PM S & P (13-17) 1PM-2:30PM FREESTYLE 4PM-6PM	6
7 SENIOR S & P 10AM-11:30AM S & P (12 + UNDER) 12:20PM-1:50PM OPEN SKATE 1PM-4PM S & P (13-17) 1:50PM-3:20PM	8 <b>ADULT DROP IN 9AM-10:30AM</b> S & P (12 + UNDER) 11AM-12:30PM S & P (13-17) 1PM-2:30PM FREESTYLE 3PM-5PM	9 FREESTYLE 8:30AM-10AM SENIOR S & P 10AM-11:30AM OPEN SKATE 12PM-2:50PM	10 <b>ADULT DROP IN 9AM-10:30AM</b> S & P (12 + UNDER) 11AM-12:30PM S & P (13-17) 1PM-2:30PM	11 FREESTYLE 8:30AM-10AM SENIOR S & P 10AM-11:30AM OPEN SKATE 12PM-2:50PM FREESTYLE 3PM-5PM	12 <b>ADULT DROP IN 9AM-10:30AM</b> S & P (12 + UNDER) 11AM-12:30PM S & P (13-17) 1PM-2:30PM FREESTYLE 4PM-6PM	13
14 SENIOR S & P 10AM-11:30AM S & P (12 + UNDER) 12:20PM-1:50PM OPEN SKATE 1PM-4PM S & P (13-17) 1:50PM-3:20PM	15 <b>ADULT DROP IN 9AM-10:30AM</b> S & P (12 + UNDER) 11AM-12:30PM S & P (13-17) 1PM-2:30PM FREESTYLE 3PM-5PM	16 FREESTYLE 8:30AM-10AM SENIOR S & P 10AM-11:30AM OPEN SKATE 12PM-2:50PM	17 <b>ADULT DROP IN 9AM-10:30AM</b> S & P (12 + UNDER) 11AM-12:30PM S & P (13-17) 1PM-2:30PM	18 FREESTYLE 8:30AM-10AM SENIOR S & P 10AM-11:30AM OPEN SKATE 12PM-2:50PM FREESTYLE 3PM-5PM	19 <b>ADULT DROP IN 9AM-10:30AM</b> S & P (12 + UNDER) 11AM-12:30PM S & P (13-17) 1PM-2:30PM FREESTYLE 4PM-6PM	20
21 SENIOR S & P 10AM-11:30AM OPEN SKATE 12PM-3PM S & P (12 + UNDER) 12:20PM-1:50PM S & P (13-17) 1:50PM-	22 <b>ADULT DROP IN 9AM-10:30AM</b> S & P (12 + UNDER) 11AM-12:30PM S & P (13-17) 1PM-2:30PM FREESTYLE 3PM-5PM	23 FREESTYLE 8:30AM-10AM SENIOR S & P 10AM-11:30AM OPEN SKATE 12PM-2:50PM	24 <b>ADULT DROP IN 9AM-10:30AM</b> S & P (12 + UNDER) 11AM-12:30PM S & P (13-17) 1PM-2:30PM	25 FREESTYLE 8:30AM-10AM SENIOR S & P 10AM-11:30AM OPEN SKATE 12PM-2:50PM FREESTYLE 3PM-5PM	26 <b>ADULT DROP IN 9AM-10:30AM</b> S & P (12 + UNDER) 11AM-12:30PM S & P (13-17) 1PM-2:30PM FREESTYLE 4PM-6PM	27
28 SENIOR S & P 10AM-11:30AM S & P (12 + UNDER) 12:20PM-1:50PM OPEN SKATE 12:30PM-3:30PM S & P (13-17) 1:50PM-	29 <b>ADULT DROP IN 9AM-10:30AM</b> S & P (12 + UNDER) 11AM-12:30PM S & P (13-17) 1PM-2:30PM FREESTYLE 3PM-5PM	30 FREESTYLE 8:30AM-10AM SENIOR S & P 10AM-11:30AM OPEN SKATE 12PM-2:50PM	31 <b>ADULT DROP IN 9AM-10:30AM</b> S & P (12 + UNDER) 11AM-12:30PM S & P (13-17) 1PM-2:30PM	1	2	3
4	5	Notes <b>*ALL TIMES SUBJECT TO CHANGE</b> <b>PLEASE CALL 734-675-7300 WITH QUESTIONS</b>				